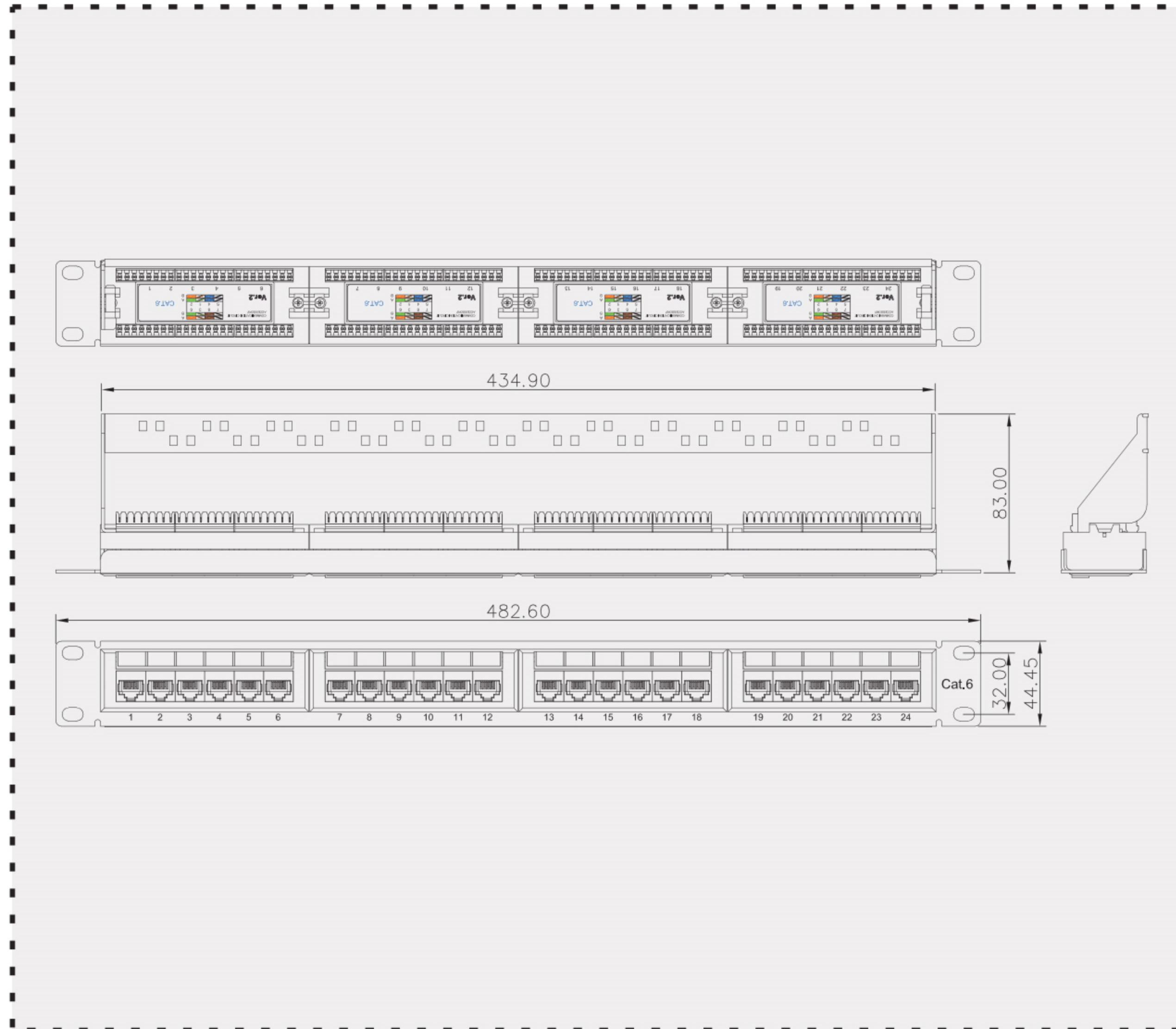
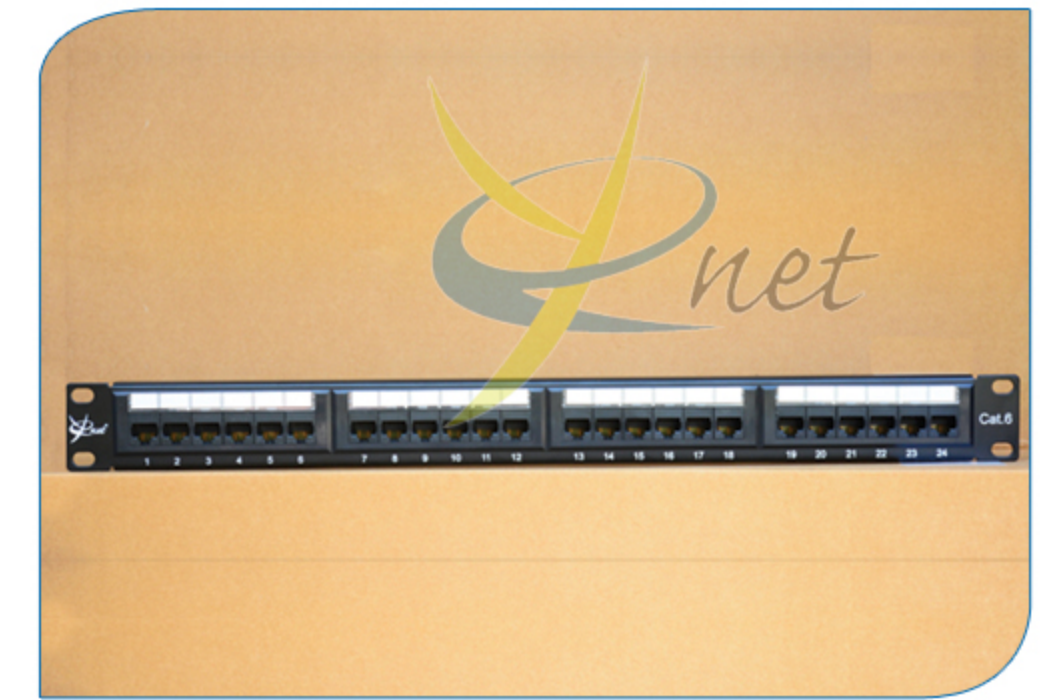




UTP CAT6 24 PORT PATCH PANEL SPECIFICATION



NOTES:

ELECTRICAL:

- 1. VOLTAGE RATING : 125 VAC RMS
- 2. CURRENT RATING : 1.5 AMP
- 3. CONTACT RESISTANCE : 100 MILLIOHMS MAX
- 4. INSULATION RESISTANCE : 1000 MEGOHMS MIN @ 500 VDC
- 5. DIELECTRIC STRENGTH : 750 VAC RMS 60Hz,1MIN
- 6. C6 PERMANENT LINK : CONFORM TO ANSI/TIA/EIA-568 B.2-1

ENVIRONMENTAL:

- 1. STORAGE : -40° TO +70°
- 2. OPERATION: -10° TO +60°
- MATES WITH MODULAR PLUG CONFORMING TO FCC PART 68

MECHANICAL:

- 1.HOUSING MATERIAL: PBT+30%G.F
- 2.PANEL FRAME : ST12,POWDER COATING IN BLACK COLOR
- 3.IDC MATERIAL : PC, TERMINAL:PHOSPHOR BRONZE,TIN PLATING
- 4.RJ45 JACK LIFE : 750 TIMES MIN
- 5.IDC LIFE : 200 TIMES MIN
- 6.WIRE : AWG 22~26
- 7.TIA Cat 6 Perm. Link Test: Worst pair NEXT margin \geq 3.0dB
- 8.Retentiveness of insertion structure: 50N 60 \pm 5s